

The Pansy Triangle Knitalong - Part 1

The time has come, the knitter said, to speak of many things.... Oh, sorry, no talking - let's just knit! I have restarted my shawl several times to get the beginning just right, so let's begin!

The Pansy Triangle Shawl

Amy Detjen

This shawl is done from side to side, starting at the right "corner". Unlike a true triangle, the corners are nipped off to eliminate the long stretched-out points that are so common in knitted triangles.

Gauge: 16 st and 20 rows = 4 inches (10 cm) in Stockinette Stitch, but that's just my gauge - your mileage will vary! This pattern will work for almost any gauge. My Pansy diamonds are about 5 inches from top to bottom... that's a more crucial measurement.

Skill Level: Adventurous Beginner

Finished Size: Knitter's choice. There is a schematic in the following pages to help you determine your size.

The Right Wing

Cast on 26 sts. I highly recommend following the chart instead of the written directions - you'll thank me in the end! However, here are the words (abbreviations and notes follow the chart):

Row 1 (RS): Sl 1, k18, m1, k7.

Rows 2, 4, 6, 8, and 10 (WS): Sl 1, k to end of row.

Row 3: Sl 1, k19, m1, k7.

Row 5: Sl 1, k20, m1, k7.

Row 7: Sl 1, k21, m1, k7.

Row 9: Sl 1, k22, m1, k7.

Row 11: Sl 1, k5, k18, yo, k7.

Row 12, and all WS rows through row 52: Sl 1, k5, p until 6 sts remain, k6. Note that, on the row above the Centered Eyelet, you want to "open up the eyelet", see the notes after the chart.

Row 13: Sl 1, k5, k1, yo, ssk, k11, CE, k2, yo, k7.

Row 15: Sl 1, k5, k2, yo, ssk, k9, k2tog, yo, k1, yo, ssk, k2, yo, k7.

Row 17: Sl 1, k5, k3, yo, ssk, k7, k2tog, yo, k3, yo, ssk, k2, yo, k7.

Row 19: Sl 1, k5, k4, yo, ssk, k5, k2tog, yo, k5, yo, ssk, k2, yo, k7.

Row 21: Sl 1, k5, k5, yo, ssk, k3, k2tog, yo, k7, yo, ssk, k2, yo, k7.

Row 23: Sl 1, k5, k6, yo, ssk, k1, k2tog, yo, k9, yo, ssk, k2, yo, k7.

Row 25: Sl 1, k5, k7, *yo, DD, yo, k4, CE, k4*, yo, ssk, k2, yo, k7 (ignore the asterisks (*) for the time being and trust me).

Row 27: Sl 1, k5, k7, *CE, k3, k2tog, yo, k1, yo, ssk, k3*, k1, yo, ssk, k2, yo, k7.

Row 29: Sl 1, k5, k6, k2tog, *yo, k1, yo, ssk, k2, ssk, yo, k1, yo, k2tog, k2, k2tog*, yo, k1, yo, ssk, k2, yo, k7.

- Row 31:** Sl 1, k5, k5, k2tog, yo, *k3, yo, ssk, k7, k2tog, yo*, k3, yo, ssk, k2, yo, k1, k6.
Row 33: Sl 1, k5, k4, k2tog, yo, k1, *k4, yo, ssk, k5, k2tog, yo, k1*, k4, yo, ssk, k2, yo, k7.
Row 35: Sl 1, k5, k3, k2tog, yo, k3, *k4, yo, ssk, k3, k2tog, yo, k3*, k4, yo, ssk, k2, yo, k7.
Row 37: Sl 1, k5, k2, k2tog, yo, k3, *k6, yo, ssk, k1, k2tog, yo, k3*, k6, yo, ssk, k2, yo, k7.
Row 39: Sl 1, k5, k1, k2tog, yo, k4, *CE, k4, yo, DD, yo, k4*, CE, k4, yo, ssk, k2, yo, k7.
Row 41: Sl 1, k5, k2tog, yo, k4, k2tog, *yo, k1, yo, ssk, k3, CE, k3, k2tog*, yo, k1, yo, ssk, k4, yo, ssk, k2, yo, k7.
Row 43: Sl 1, k5, k2, yo, ssk, k2, ssk, *yo, k1, yo, k2tog, k2, k2tog, yo, k1, yo, ssk, k2, ssk*, yo, k1, yo, k2tog, k2, k2tog, yo, k1, yo, ssk, k2, yo, k7.
Row 45: Sl 1, k5, k3, yo, ssk, k2, *k5, k2tog, yo, k3, yo, ssk, k2*, k5, k2tog, yo, k3, yo, ssk, k2, yo, k7.
Row 47: Sl 1, k5, k4, yo, ssk, k1, *k4, k2tog, yo, k5, yo, ssk, k1*, k4, k2tog, yo, k5, yo, ssk, k2, yo, k7.
Row 49: Sl 1, k5, k5, yo, ssk, *k3, k2tog, yo, k7, yo, ssk*, k3, k2tog, yo, k7, yo, ssk, k2, yo, k7.
Row 51: Sl 1, k5, k6, yo, *ssk, k1, k2tog, yo, k9, yo*, ssk, k1, k2tog, yo, k9, yo, ssk, k2, yo, k7.

Continue as established and repeat rows 25 to 52 (28 rows) until you have as many Pansies as you planned on your schematic (mine is 5 pansies wide). Each time you work the RS rows, you work the 14 stitches between the asterisks (*s) an additional time. So the first time, you work each row as written, ignoring the asterisks. The second time, you work as written, but repeat from * to * twice, instead of once. The third time, repeat those 14 stitches three times, etc. Continue that way until you have as many Pansies as your heart desires, ending after a row 52.

Row 53: Sl 1, k5, k7, *yo, DD, yo, k11*, yo, DD, yo, k11, yo, ssk, k2, yo, k7.

Row 54 and 56: Sl 1, k5, p until 6 sts remain, k6.

Row 55: Sl 1, k5, k7, CE, k11, CE, k12, yo, ssk, k2, yo, k1, k6.

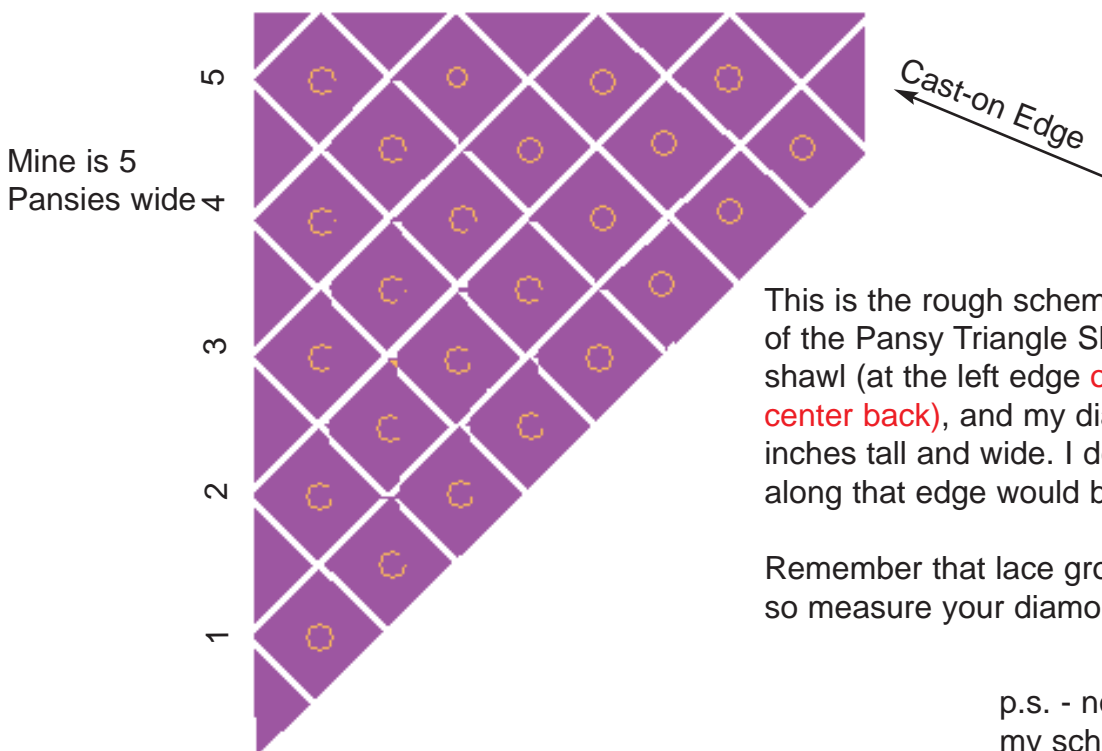
Row 57: Sl 1, k54.

Row 58 and all WS rows until 64: Sl 1, k to end of row.

Row 59: Sl 1, k54.

Row 61: Sl 1, k54.

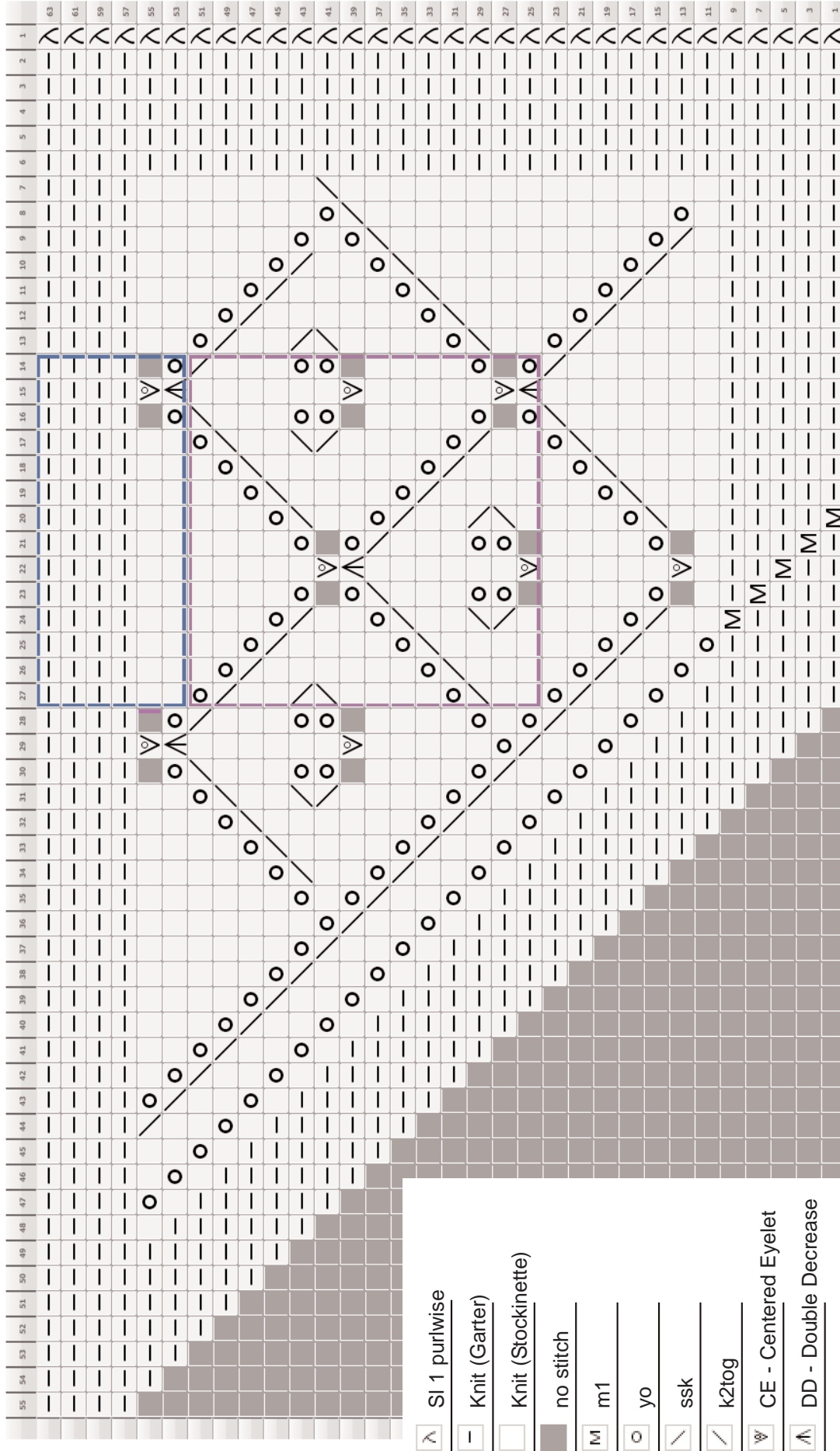
Row 63: Sl 1, k54.



This is the rough schematic of the Right Wing of the Pansy Triangle Shawl. I wanted a 26-28" shawl (at the left edge of diagram, near the center back), and my diamonds are about 5 inches tall and wide. I decided that 5 Pansies along that edge would be perfect.

Remember that lace grows when it's blocked, so measure your diamonds when stretched.

p.s. - no fair making fun of my schematic in public...



Pansy Triangle Shawl - Chart 1 - The Right Wing

Created in Knit Visualizer (www.knitfoundry.com)

1. The Wrong Side rows are worked plain, **always slipping the first stitch**: knit where the chart shows Garter Stitch, and purl where the chart shows Stockinette Stitch.
2. The purple box shows the 14-stitch/28-row repeat of the Pansies. Every time you work rows 25-52 (28 rows), you work the stitches inside this box one additional time.
3. The blue box is the 14-stitch repeat for those rows.

Expanded Legend



Sl 1 - Slip 1 purlwise

With yarn in front, slip 1 purlwise



Garter Stitch

knit on RS and on WS rows (a visual reminder that those sts are in Garter Stitch)



Stockinette Stitch

knit on RS and purl on WS rows (a visual reminder that those sts are in Stockinette Stitch)



No Stitch

Placeholder - No stitch made.



make one

Make one by lifting strand in between stitch just worked and the next stitch, knit into back of this thread.



yo

Yarn Over



ssk

Slip one stitch as if to knit, Slip another stitch as if to knit. Insert left-hand needle into front of these 2 stitches and knit them together



k2tog

Knit two stitches together as one stitch



CE - Centered Eyelet

Slip 1 st knitwise, knit next st but don't remove from left-hand needle, pass slipped stitch over, yo, k2tog - 3 sts become 3 sts.



DD - Double Decrease

Slip 2 sts tog knitwise, slip 1 more st knitwise, insert tip of left needle back through the 3 sts and knit them together as one - 3 sts become 1 st with center stitch on top.

Opening Up the Eyelet

On the WS row above the Centered Eyelet, when you get to the YO, you will probably notice that it does not look like a proper stitch. Instead of purling it (because we're in Stockinette Stitch), you want to purl the stitch below it instead. Essentially, you're purling that YO together with the stitch beneath it. It tends to look a little sloppy when you do it, but in a few rows, the sloppiness will nestle in.

If you forget to do this on the WS row, you can do it from above on the next RS row!

I reordered these items and removed an extraneous listing.