

## The Pansy Triangle Knitalong - Part 3

And now for the Left Wing. (Notice how I've resisted all temptation at political humor, and please give me some credit, because it's killing me!!!)

### The Left Wing

You should have the following stitches on your needles:

If you have: 3 pansies = 69 sts  
 4 pansies = 83 sts  
 5 pansies = 97 sts  
 6 pansies = 111 sts  
 7 pansies = 125 sts, and so on (add 14 sts for each additional Pansy)

And, if you have a slightly different number, please feel free to "fudge".

**Too Many Stitches:** If you have too many stitches, you can work a couple of k2togs into the Garter Stitch ridges (rows 1-7) and nobody will ever know the difference. Garter Stitch hides decreases really, really well.

**Too Few Stitches:** If you have too few stitches, you can add them in during the Garter Stitch ridges. Garter Stitch hides decreases really, really well. Have I mentioned how much I love Garter Stitch?

**Set-Up Row A (WS):** Sl 1, k5, p until 6 sts remain, k6. (You may not need to work this row if you are ready for a Right Side row, it depends on where you stopped at the end of Part 2.)

**Rows 1-7:** Sl 1, k to end of row.

**Row 8, and all WS rows through row 52:** Sl 1, k5, p until 6 sts rem, k6.

**Row 9:** Sl 1, k9, \*k3, CE, k8\*, k3, CE, k11, k2tog, yo, k2tog, k2, yo, k2tog, k6.

**Row 11:** Sl 1, k9, \*k2, k2tog, yo, k1, yo, ssk, k7\*, k2, k2tog, yo, k1, yo, ssk, k9, k2tog, yo, k2tog, k2, yo, k2tog, k6.

----- repeat starts here -----

**Row 13:** Sl 1, k9, \*k1, k2tog, yo, k3, yo, ssk, k6\*, repeat from \* to \* until 29 stitches remain, k1, k2tog, yo, k3, yo, ssk, k7, k2tog, yo, k2tog, k2, yo, k2tog, k6. *Note:* You may want to place a marker at the end of the last repeat to remind you to look at the directions for the end of the row.

**Row 15:** Sl 1, k9, \*k2tog, yo, k5, yo, ssk, k5\*, repeat from \* to \*, k2tog, yo, k5, yo, ssk, k5, k2tog, yo, k2tog, k2, yo, k2tog, k6.

**Row 17:** Sl 1, k8, k2tog, \*yo, k7, yo, ssk, k3, k2tog\*, repeat from \* to \*, yo, k7, yo, ssk, k3, k2tog, yo, k2tog, k2, yo, k2tog, k6.

**Row 19:** Sl 1, k7, k2tog, yo, \*k9, yo, ssk, k1, k2tog, yo\*, repeat from \* to \*, k9, yo, ssk, k1, k2tog, yo, k2tog, k2, yo, k2tog, k6.

**Row 21:** Sl 1, k6, k2tog, yo, k1, \*k2, k2tog, yo, k1, yo, ssk, k3, yo, DD, yo, k1\*, repeat from \* to \*, k2, k2tog, yo, k1, yo, ssk, k3, yo, DD, yo, k2tog, k2, yo, k2tog, k6.

**Row 23:** Sl 1, k5, k2tog, yo, k2, \*k2, ssk, yo, k1, yo, k2tog, k3, CE, k1\* repeat from \* to \*, k2, ssk, yo, k1, yo, k2tog, k3, k2tog, yo, k2tog, k2, yo, k2tog, k6.

**Row 25:** Sl 1, k7, yo, ssk, \*k3, CE, k3, k2tog, yo, k1, yo, ssk\*, repeat from \* to \*, k3, CE, k3, k2tog, yo, k2tog, k2, yo, k2tog, k6.

**Row 27:** Sl 1, k8, yo, \*ssk, k7, k2tog, yo, k3, yo\*, repeat from \* to \*, ssk, k7, k2tog, yo, k2tog, k2, yo, k2tog, k6.

**Row 29:** Sl 1, k9, \*yo, ssk, k5, k2tog, yo, k5\*, repeat from \* to \*, yo, ssk, k5, k2tog, yo, k2tog, k2, yo, k2tog, k6.

**Row 31:** Sl 1, k9, \*k1, yo, ssk, k3, k2tog, yo, k6\*, repeat from \* to \*, k1, yo, ssk, k3, k2tog, yo, k2tog, k2, yo, k2tog, k6.

**Row 33:** Sl 1, k9, \*k2, yo, ssk, k1, k2tog, yo, k7\*, repeat from \* to \*, k2, yo, ssk, k1, k2tog, yo, k2tog, k2, yo, k2tog, k6.

**Row 35:** Sl 1, k9, \*k3, yo, DD, yo, k3, k2tog, yo, k1, yo, ssk\*, repeat from \* to \*, k3, yo, DD, yo, k2tog, k2, yo, k2tog, k6.

**Row 37:** Sl 1, k9, \*k3, CE, k3, ssk, yo, k1, yo, k2tog\*, repeat from \* to \*, k3, k2tog, yo, k2tog, k2, yo, k2tog, k6.

**Row 39:** Sl 1, k9, \*k2, k2tog, yo, k1, yo, ssk, k3, CE, k1\*, repeat from \* to \*, k2, k2tog, yo, k2tog, k2, yo, k2tog, k6.

----- repeat ends here (after Row 40) -----

Repeat rows 13-40 until 39 sts remain at the end of a row 40.

**Row 41:** Sl 1, k10, k5, k2tog, yo, k3, yo, ssk, k7, k2tog, yo, k2tog, k2, yo, k2tog, k6.

**Row 43:** Sl 1, k9, k2tog, yo, k5, yo, ssk, k5, k2tog, yo, k2tog, k2, yo, k2tog, k6.

**Row 45:** Sl 1, k8, k2tog, yo, k7, yo, ssk, k3, k2tog, yo, k2tog, k2, yo, k2tog, k6.

**Row 47:** Sl 1, k7, k2tog, yo, k9, yo, ssk, k1, k2tog, yo, k2tog, k2, yo, k2tog, k6.

**Row 49:** Sl 1, k6, k2tog, yo, k11, yo, DD, yo, k2tog, k2, yo, k2tog, k6.

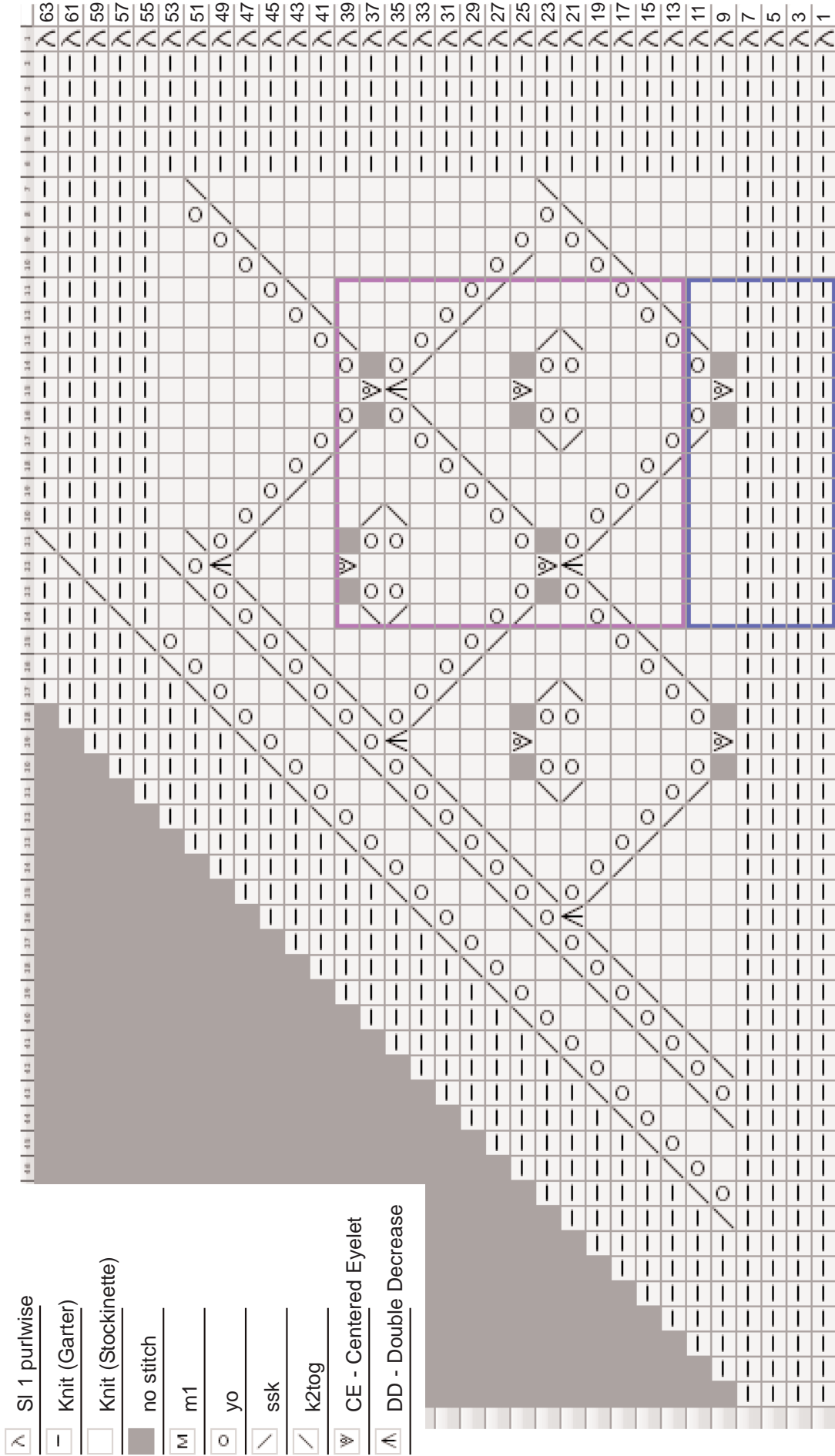
**Row 51:** Sl 1, k5, k2tog, yo, k12, k2tog, yo, k2tog, k2, yo, k2tog, k6.

**Row 53:** Sl 1, k20, k2tog, k2, yo, k2tog, k6.

**Rows 54-62 (WS):** Sl 1, k to end of row.

**Rows 55-63 (RS):** Sl 1, k until 8 sts remain, k2tog, k6.

BO all stitches. Weave in ends. Block to the size and shape you want (easy for me to say).



**Pansy Triangle Shawl - Chart 3 - The Left Wing**

Created in Knit Visualizer ([www.knitfoundry.com](http://www.knitfoundry.com))

1. The Wrong Side rows are worked plain, always slipping the first stitch: knit where the chart shows Garter Stitch, and purl where the chart shows Stockinette Stitch.
2. The purple box shows the 14-stitch/28-row repeat of the Pansies. Every time you work rows 13-40 (28 rows), you work the stitches inside this box one time less than you did last time.
3. The blue box is the 14-stitch repeat for those rows.