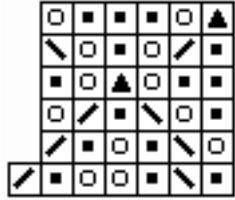


Dear Knitter, An error has been discovered in my lace chart appearing in the Spring/Summer, 2006 issue of *Vogue Knitting* magazine.

On page 140: Chart 2 should look like this:



i.e. after row 1, eliminate the last stitch (on far left of the chart) on all subsequent rows.
AND in the text: under Instructions, 4th line,
Row 3 k1, yo, k7, yo...etc