

small Faroese Shawl:

(Chart above)

1 wheel Unspun Icelandic wool, 24" #9 to #10-1/2 needle.

Cast on (*German Twisted method*) 127 stitches.

Row 1 (and all odd-numbered rows): Knit. Now slip all first sts p'wise wwif.

Row 2: K4, ssk, k49, k2tog, k13, ssk, k49, k2tog, k4 (123 sts on needle).

Row 4: K4, ssk, k47, k2tog, k13, ssk, k47, k2tog, k4 (119 sts on needle).

Row 6: K4, ssk, k1, (yo, ssk) 22x, k2tog, k13, ssk, (k2tog, yo) 22 times, k1, k2tog, k4 (115 sts on needle).

Row 8: K4, ssk, k43, k2tog, k13, ssk, k43, k2tog, k4 (111 sts on needle).

Row 10: (chart begins) k4, ssk, k13, (yo, ssk, k10)x6, yo, ssk, k12, k2tog, k4 (109 sts).

Row 12: k4, ssk, k10, (k2tog, yo, k1, yo, ssk, k7)x7, end last repeat k10, k2tog, k4.

Row 14: k4, ssk, k8, (k2tog, yo, k3, yo, ssk, k5)x7, end last repeat k8, k2tog, k4.

Row 16: k4, ssk, k6, (k2tog, yo, k5, yo, ssk, k3)x7, end last repeat k6, k2tog, k4.

etc... continue with chart to row 56 and back.

You have 7 gusset sts + 3 sts on either side. Work perpendicular cast-off across the top of the gusset (still slipping each first stitch p'wise): *k2, k2tog. Turn. slide a stitch from R needle to L and k2tog, k2. Repeat from * across gusset and weave 3 to 3. Block.

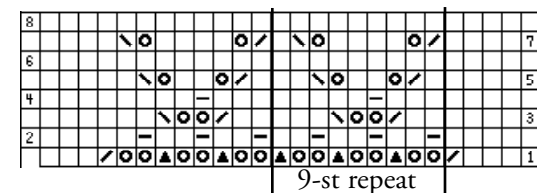
*Amy Detjen's 'centered eyelet': above the (yo, dbl-dec, yo) from preceding row, slip 1, knit into 2nd stitch but do not remove from L needle, psso, yo, k2tog. On next row, dip needle under horizontal strand rning across yo & k both strands together. Huge thanks to Amy Detjen and Marilyn van Keppel for help with this design.

*from Meg Swansen's book, *A Gathering of Lace*

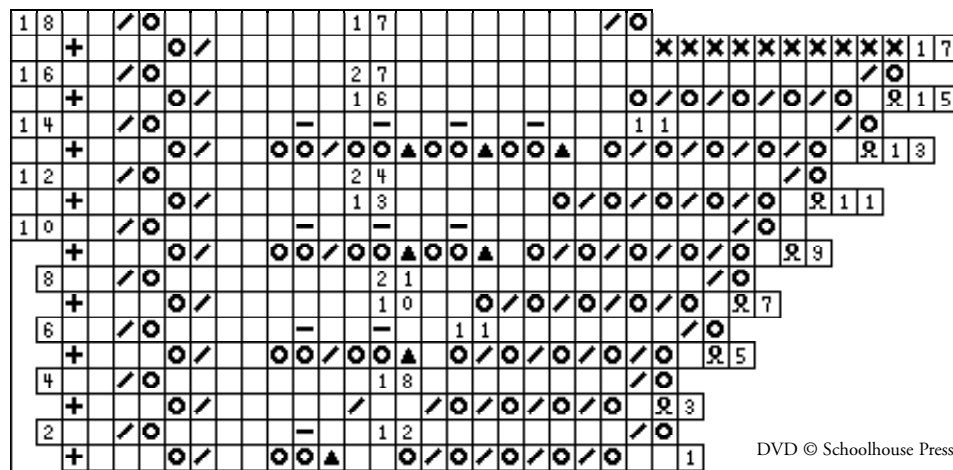
- blank = knit
- k2tog
- ssk
- sl1, k2tog, psso
- yarn over (yo)
- yo, yo
- p1 into 1 of 2 yo
- k into back of yo
- unite last st to shawl
- cast off

Lace Stole (charts below)

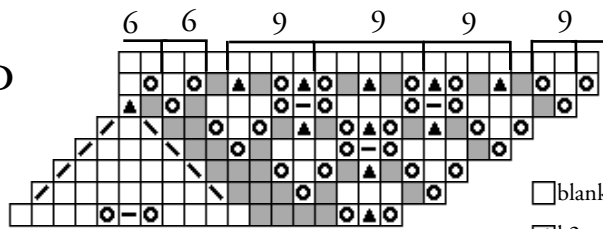
3 balls Lilac, 1 ball Silver Icelandic Laceweight Wool, 24" #9 to #10-1/2 needle. Invisibly cast on 70 sts. K 1 row. Follow chart A to wanted length. End with plain k row, during which decrease to 55 sts. Perpendicular lace border: **with Silver wool, cast on 23 sts. Turn and begin chart B, uniting last border stitch together with stole stitch. Cast off loosely. Pick up sts from cast on, decrease to 55 sts and repeat from **. Block.



STOLE charts A (above) and B (below)

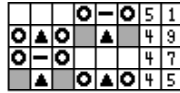


D

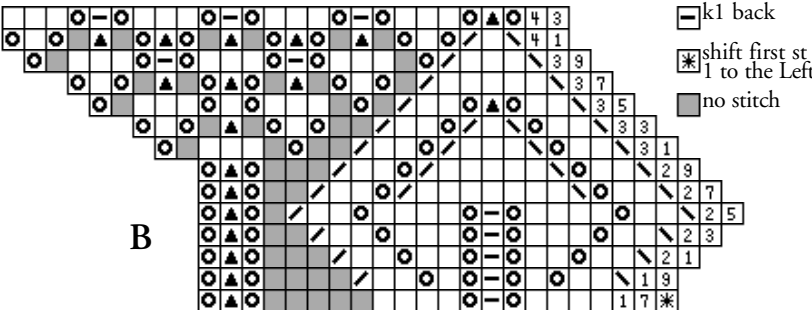


Mañanita / Primula chart
based on a design by
Marianne Kinzel*

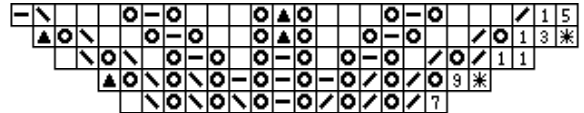
C



- blank: knit
- ▣ k2tog
- ▤ ssk
- ▲ sl1, k2tog, pssso
- ⊙ yarn over
- ▢ k1 back
- ⋆ shift first st 1 to the Left
- no stitch



B



A

Mañanita / Primula

Cast on 84, loosely
Knit one round plain
Rnd 1 yo, k2tog around
Rnds 2 & 3 knit plain
Rnd 4 *k1, yo, k2tog, yo. Repeat from * around (112 stitches).
Rnds 5 & 6 knit plain
Go to round 7 on chart A above and work each line 8x per rnd. Every other rnd is plain knit. Go to **B** (16x per rnd), **C** (64x per rnd) and **D** (32x per rnd). Work section C two (or more)

times for a longer Mañanita. **NOTE the stars on rnds 9, 13 and 17:** move beginning marker one stitch to the Left. Crochet border as shown on DVD: *gather 2 sts chain 9, (gather 3 sts chain 9)x3, gather 2 sts chain 6, gather 3 sts chain 6. Repeat from * around. I-Cord neck edge. Block

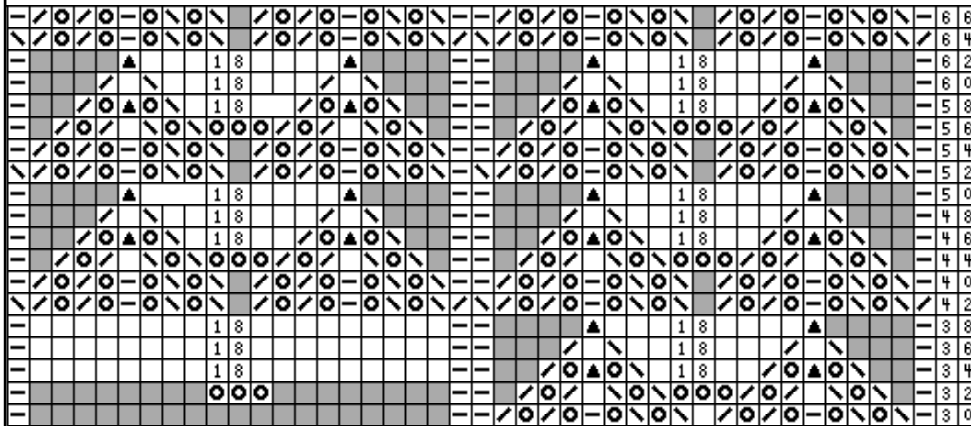
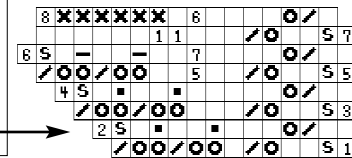
*This motif is a table-center in Marianne Kinzel's, *First Book of Modern Lace Knitting* (Dover Publications), available from Schoolhouse Press.

Mañanita / Peacock

- Cast on 80. Knit one round.
- Begin chart.
- Repeat each line 10x per round.
- Every other round is plain knit, except following the triple yo: work (k1, p1) 3x into each of the 3 yarn overs, resulting in 18 stitches.
- The greyed squares indicate No Stitch and are there to provide a visual of the motif.
- The numbers within the chart indicate how many plain knit stitches to work.

- blank square = knit
- ▣ k2tog
- ▤ ssk
- ▲ sl1, k2tog, pssso
- ⊙ yarn over (yo)
- ▢ k1 back
- ▣ knit into front & back of a single stitch
- no stitch
- ▣ purl into one of the 2 yos
- ⊞ slip
- ⊠ cast off

Here is a possible sideways lace edging for your *Mañanita*. Invisibly cast on 10 sts. Turn. K9, k last stitch together with raw shawl stitch. Turn. Begin row 1 of chart. Unite at ends of rows 2, 4, 6 & 8. Continue around; weave end to beginning.



Mañanita / Peacock chart
based on a cotton table-center
design by Herbert Neibling

Knit one more plain round at the top of this chart. Choose a lace edging and work a sideways border as shown on the *Stole*. Or, work a crocheted border shown on the *Primula*.

