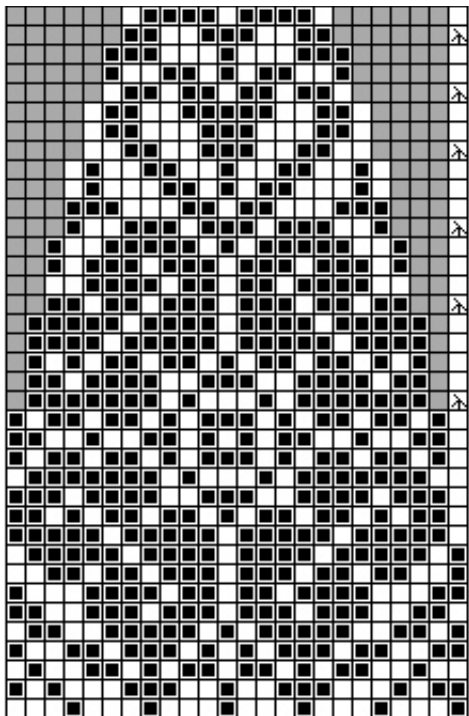


Chart for shallow, 'ballet' neck




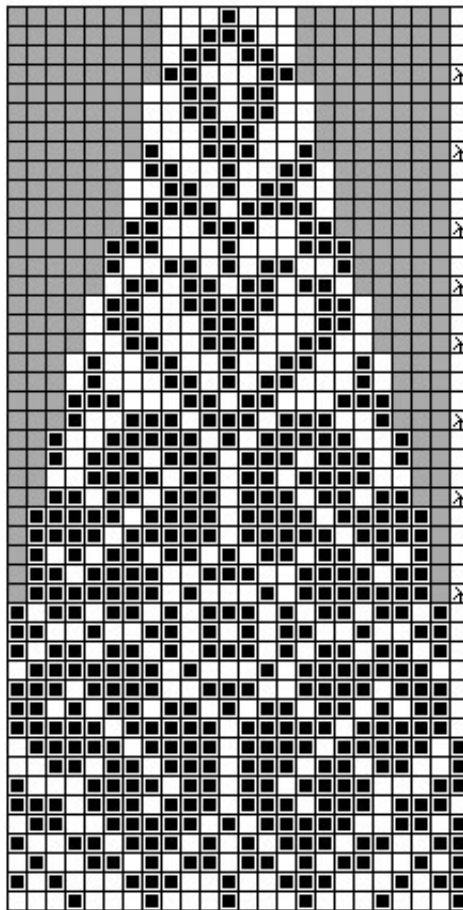
starting stitch
(center of motif)  = cdd, centered dbl-dec:
sl 2 tog k'wise, k1, p2sso

Chart for deeper, standard neck




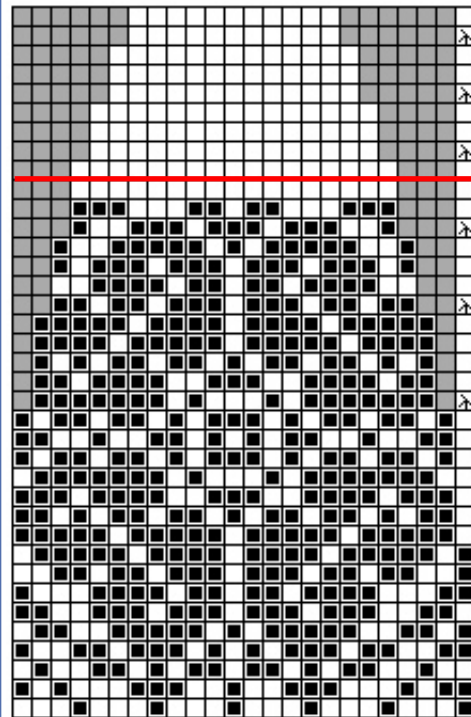

starting stitch
(center of motif)  = cdd, centered dbl-dec:
sl 2 tog k'wise, k1, p2sso

Chart for shallow, 'ballet' neck -
flower only

Work the chart for flower, then continue w/
shaping in solid color (as shown below); or, if
working at a heavier gauge, end the yoke after
the flower (red line, below) as Lori did on p10
(which makes a wider neck).



starting stitch
(center of motif)  = cdd, centered dbl-dec:
sl 2 tog k'wise, k1, p2sso