



Newsletter #28

February 2015

Knitting Camp Applications!
2/1/15 - 2/8/15
see p3 for details



Dear Knitter,

Knitting a hat is a wonderful small project, and especially welcomed this time of year. We are pleased to give a free Elizabeth Zimmermann hat design (see p4) to our Newsletter Subscribers, and hope it will inspire you to cast on.

The red & white hat appears on page 22 of the updated & expanded *Elizabeth Zimmermann's Knitting Workshop* (see below) and is pictured to present an example of a left-spiraling decrease. It had to be sneakily arranged so as to hide the large "HH" at the center front and avoid having to explain what it meant. Even so, there have been curious inquiries requesting directions. Now I have the time, inclination, and space to expound upon the subject, and expound I will...(continued on p2)



Praise for the newly expanded, full-color EZKW!

*"...thank you...for the invaluable gem that is the new and updated **Knitting Workshop**. The layout is so fresh and inspiring, and I absolutely love all the editor's notes. Truly, it was like hearing a dear, old trusted friend tell beloved stories in a new, wonderful way."*

"I am so happy with the new version...I love the way that EZ's teaching tools, comments, and helpful hints are placed throughout the text. A fresh way to look at a book filled with information that helped advance my knitting in many ways!"

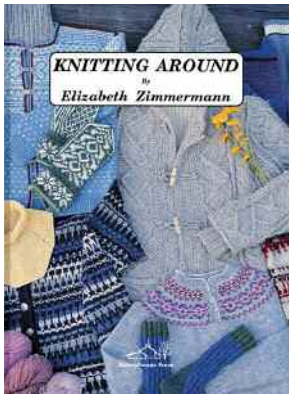
"I am simply astonished. It's the best update ever. It's not made-over or tartered up or face-lifted. It's so amazing to see the diagrams and sweaters knitted up in gorgeous color. It's so beautifully written as before; I love the editorial notes and the EZ notes; I love the photographs."

free shipping* on any order over \$50!
Through 2/8/15 (use promo code 'Feb Sale').
*US postage only. International orders will be credited the equivalent US rate.

New! Schoolhouse Press Pattern #54
Blue Motion by Felipe Cavalheiro



SHP is proud to present this stunning color patterned sweater - the first published design from Felipe Cavalheiro, known to many knitters as 'Brazilianknitter.' Felipe's use of a Latvian chart, combined with skillful shading of nine different Shetland blues, makes a spectacular pullover.



If you've read my mother's Digressions in *Knitting Around* (specifically pages 119-125), you will have an idea how important skiing was to both of our parents. EZ writes: *I suppose I shall never forget the very first trip. I had been sound asleep, and somewhere – Fischhausen-Neuhaus I think – I suddenly awoke. It had become broad daylight during my slumber, and there was brilliant snow, clean, and actually sparkling. I had never seen snow sparkle before. The*

English stuff was mostly white, but soggy, and I suddenly realized that all the stories of the clean, crisp shining snow in the Bavarian Alps had been true. It started a train of intoxication in me which had the most far-reaching consequences, and brought me the best things in life; can you wonder that I want to pass this sentiment on to our children?

Shortly after our family moved from New Hope PA to Shorewood WI, my parents were delighted to learn about the Heiliger Hügel (*Holy Hill) ski club, just outside Milwaukee. (*from the top of the hill, one can see the Holy Hill basilica, National Shrine of Mary; thus the two pointy towers on EZ's knitted HH logo). We skied there as many times as possible through the winters, and had picnics and birthday parties on the hill during the summers. I believe that Elizabeth designed this hat (and knitted many of them) as a fund-raiser for the ski club. There were never specific instructions for the bonnet, but I have converted it into a hat; instructions on page 2.

The *Heiliger Hügel* ski club roars on to this day (<http://hhsclub.clubexpress.com>). And our parents' attempt to make us passionate skiers worked: as young adults, Lloie and I spent two consecutive winters ski-bumming. First at Sugarloaf Mountain in Maine, where we skied all day and were waitresses for supper only; followed by a season at Mammoth Mountain in California, where we sold lift tickets in the mornings and skied every afternoon. At the end of that second season, I headed to school in Germany, and Lloie remained at Mammoth to become a certified ski instructor.

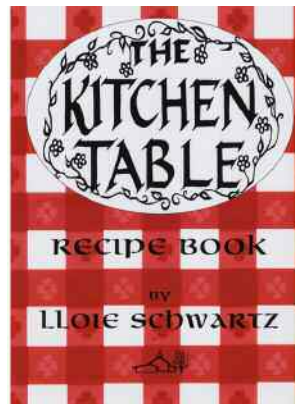
Top right is a photo of my fearless sister in a slalom race. She is wearing an original Bohus cap (the "Dean" pattern) that our ma brought back from Sweden; no helmets in those days. Lloie also modelled for Head Ski ads, and was the stand-in for Doris Day in the movie, *Caprice*. If you ever see the movie, that is Lloie in the yellow stretch pants, matching capelette(!) and blonde wig, skiing down the mountain, being pursued and fired upon by a Bad Guy with rifle. JUST as Lloie/Doris is about to ski over the edge of the cliff, a helicopter appears with a dangling ladder. Doris/Lloie grabs the ladder and is whisked away to safety!



The helicopter belonged to Frank Sinatra, and was used because it was specialized to function at high altitudes. The scene was shot in the snow fields, far above the last lift and everyone had to climb up for each of the many takes.

Tying into things red & white, here is Lloie's cookbook, with recipes accumulated during her past 37 years as owner and head chef of *The Kitchen Table* restaurant in Marshfield, WI – well known to Knitting Campers. And, how fortuitous: on Jan 17th, an article about The Kitchen Table was published in the local paper.

<http://www.hubcitytimes.com/news/business/kitchen-table-restaurant-tastes-feels-like-home/>



The Kitchen Table: A restaurant that tastes and feels like home



Meg and her father outside the Holy Hill warming hut. That is an official HH patch sewn onto the sleeve of Meg's jacket.

The warming hut in the background was built a few years after we joined the club. On a voluntary basis, HH members ganged together one summer to help build it on the weekends.

Other than clearing brush, I'm sure us kids were of very little help. We spent the time running up and down the hill, waiting for the picnic.

Lloie remembers helping to build the outside bench that surrounds the building. The finished hut was very 'rustic' (no running water), but there was a large fireplace and it was a most welcome refuge on bitter cold days.

100% Wool from Schoolhouse Press

Directions for Meg's adaptation of EZ's Pinwheel hat (p4) are given for Québécoise and Unspun Icelandic wools. Choose from 30 colors of Unspun and 25 colors of Québécoise.

Click [here](#) to see all 13 wools available from Schoolhouse Press.



Québécoise wool (25 colors)



Unspun Icelandic (30 colors)



EZ's original Holy Hill Hat

Celebrate the 42nd Year of Meg Swansen's Knitting Camp

Established by Elizabeth Zimmermann and carried on by Meg Swansen, our Knitting Camp continues to bring joy, build camaraderie, and further knitting knowledge. We are offering four

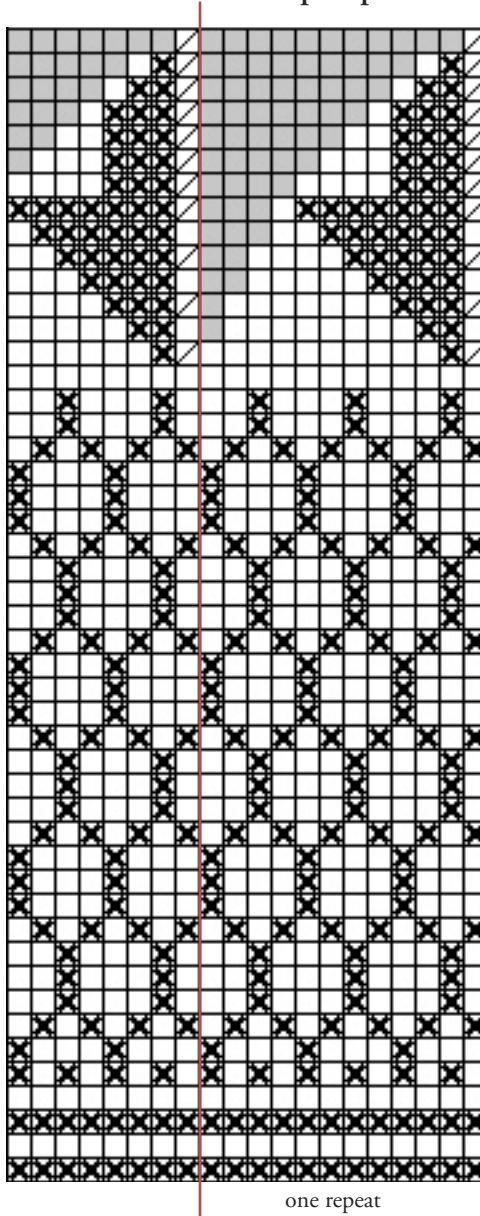
sessions during July. The application period begins on Sunday, February 1, 2015 and ends on Sunday, February 8, 2015.

<http://www.schoolhousepress.com/camp.htm>





Pattern Chart
for
Pinwheel-Top Cap



Pinwheel-Top Cap
From EZ's bonnet (p22 in the [updated EZKW](#))
adapted by Meg Swansen

gauge: 4.75 sts to 1" (5 sts to 1")

size: 20.5" (19.5") around; 5.5" from cast on to dec.

materials: 1 wheel each cream, bright red *Unspun Icelandic* (on model) A pair of 24" circ needles of a size to obtain gauge; about #6-8 (#5-6). Or 1 skein each *Québécoise* (lower right) in red and white.

Simple Unspun Icelandic Version

With smaller needle and single-strand wool of Unspun Icelandic, with MC Cast On 92. Join and knit 5 rounds. Purl 1 rnd. Switch to 2-ply and needle size required to obtain gauge. K 1 rnd white. Work chart to top of honeycomb motif. During solid rnd of MC, dec 1 stitch somewhere (91 sts, divisible by 7). Begin pinwheel chart as follows: *k2tog white, k1 red, k10 white, repeat from *. gradually decreasing down to 7 sts. Finish off.

Slightly More Laborious Québécoise Version (closer to EZ's original with picot lower edge)

With MC, provisionally cast on 96 sts. (K1 rnd white, k1 rnd red)x2, k1 rnd white. Work chart to top of honeycomb motif. During solid rnd of MC, inc 2 sts somewhere (98 sts, divisible by 7). Begin pinwheel but with 12 sts between the initial dec, as follows: *k2tog white, k1 red, k11 white, repeat from *. Follow chart to top.

Pick up Provisional cast on sts and knit 5 rnds. Then (yo, k2tog) around for Picot Edge. K 5 more rnds. End with 1 rnd of red. Fold hem on Picot rnd, and sew down raw sts by skimming through fabric and through raw stitch. The sewing line should be right on the first line of the solid red you knitted on the 'right' side the lower edge.

Good Knitting.
MS



© 2014, Schoolhouse Press
schoolhousepress.com

Or, if you'd rather have your decreases veer to the L with ssk, follow the chart to the right for the top of the hat.
First rnd: *ssk white, k10 white, k1 red. Repeat from *.

